



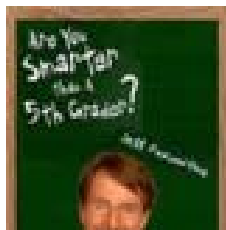
Kansas Multi-Tier System of Supports

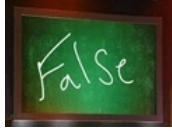
September 4, 2008

Dr. Alexa Posny

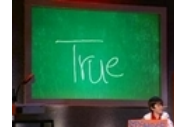


Are you smarter than a 5th grader?





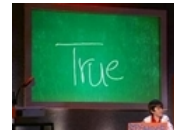
Warm-Up Categories



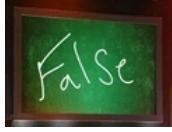
- History
- Geography
- Science
- Mathematics
- Language Arts



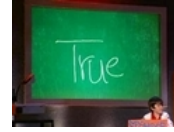
History



- Who did not sign the
U.S. Constitution?
- George Washington
 - John Hancock
 - Benjamin Franklin
 - Alexander Hamilton



History

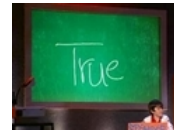


Who did not sign the U.S. Constitution?

-
- **John Hancock**
-
-

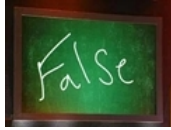


Geography

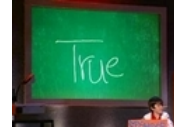


Which is the capital of Nebraska?

- **Boise**
- **Omaha**
- **Springfield**
- **Lincoln**



Geography

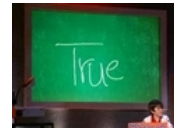


Which is the capital of Nebraska?

-
-
-
- **Lincoln**

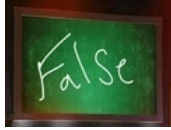


Science

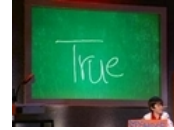


Common table salt is a chemical compound of:

- **Sodium & Chloride**
- **Sodium & Chromium**
- **Magnesium & Potassium**
- **Sodium & Magnesium**



Science

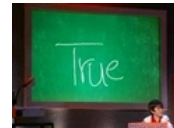


Common table salt is a chemical compound of:

- Sodium & Chloride
-
-
-



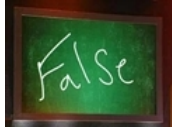
Mathematics



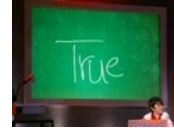
Complete this problem:

$$\frac{3}{4} + \frac{1}{2} =$$

- 3/8
- 4/8
- 6/4
- 10/8



Mathematics



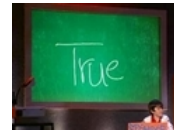
Complete this problem:

$$\frac{3}{4} + \frac{1}{2} =$$

-
-
-
- 10/8**

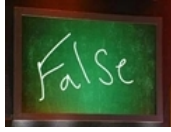


Language Arts

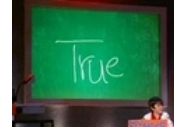


Which sentence is incorrect?

- Lay yourself down and lie in wait.
- The dog will wag it's tail.
- There's their mother over there.
- Rise up singing to raise your spirits.



Language Arts

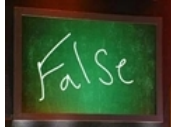


Which sentence is incorrect?

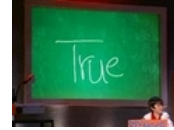
-
- The dog will wag it's tail.
-
-

Are you smarter than the Commissioner?





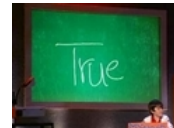
Real Test



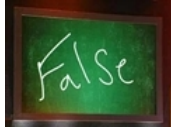
- What does MTSS stand for?
- Middle Tennessee Scuba & Swim
- Military Training Service Support
- Main Traffic Signal System
- Midwest Teen Sex Show



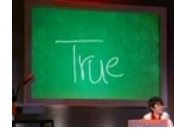
MTSS



- What does MTSS stand for?
- Middle Tennessee Scuba & Swim
 - Military Training Service Support
 - Main Traffic Signal System
 - Midwest Teen Sex Show



MTSS

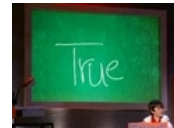


What does MTSS stand for?

- Multi-Tiered System of Support
- Multi-Tiered Systems of Support
- Multi-Tier System of Supports
- Multi-Tier Systems of Support
- Multi-Tiered Support Systems



MTSS

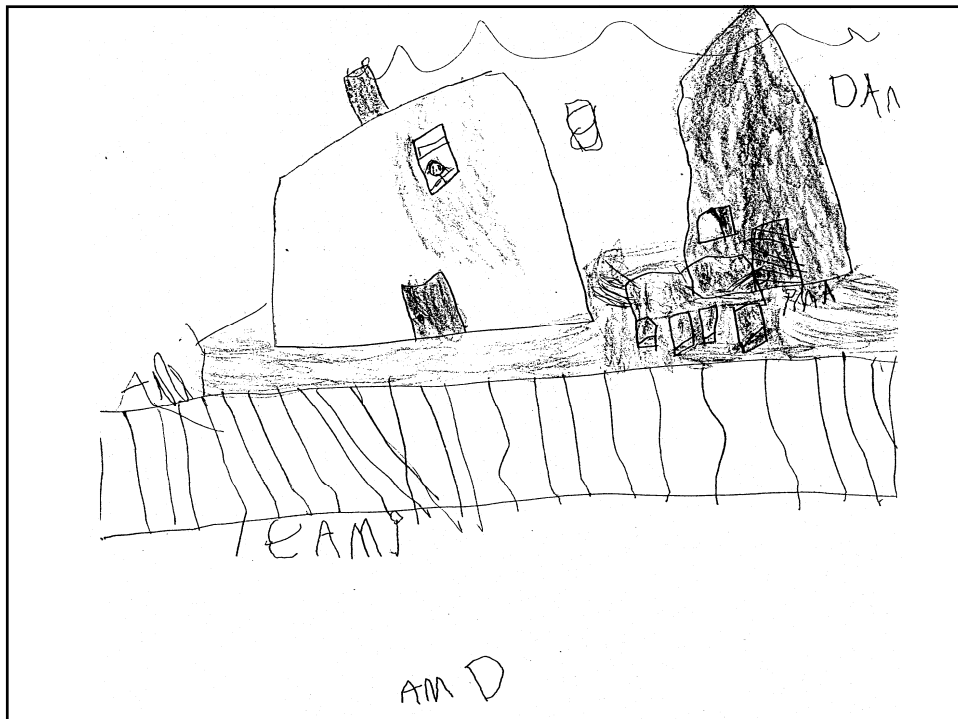


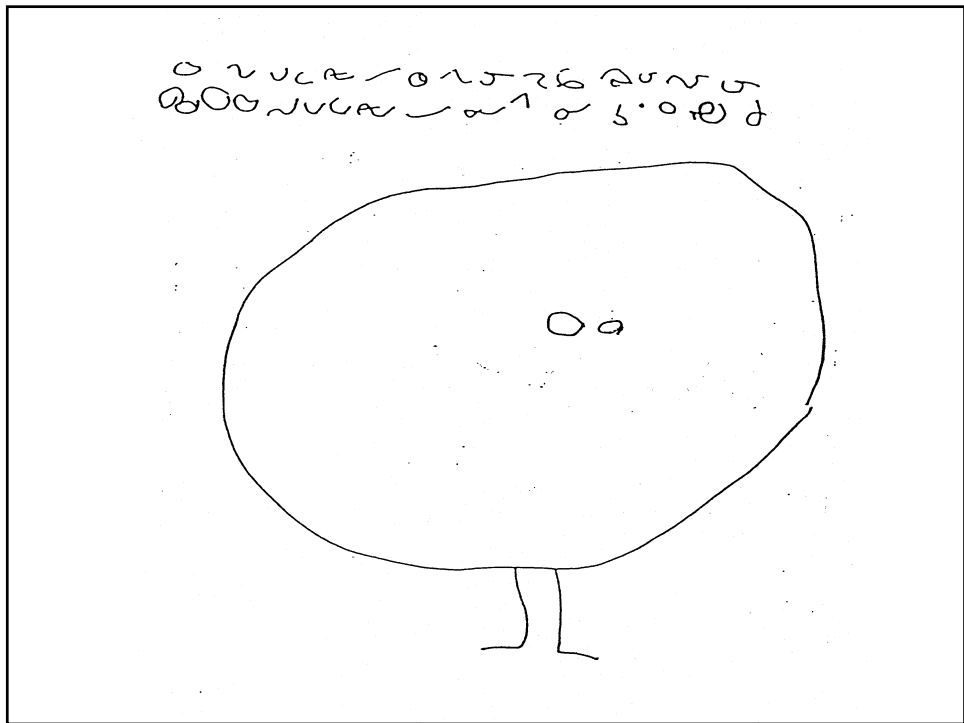
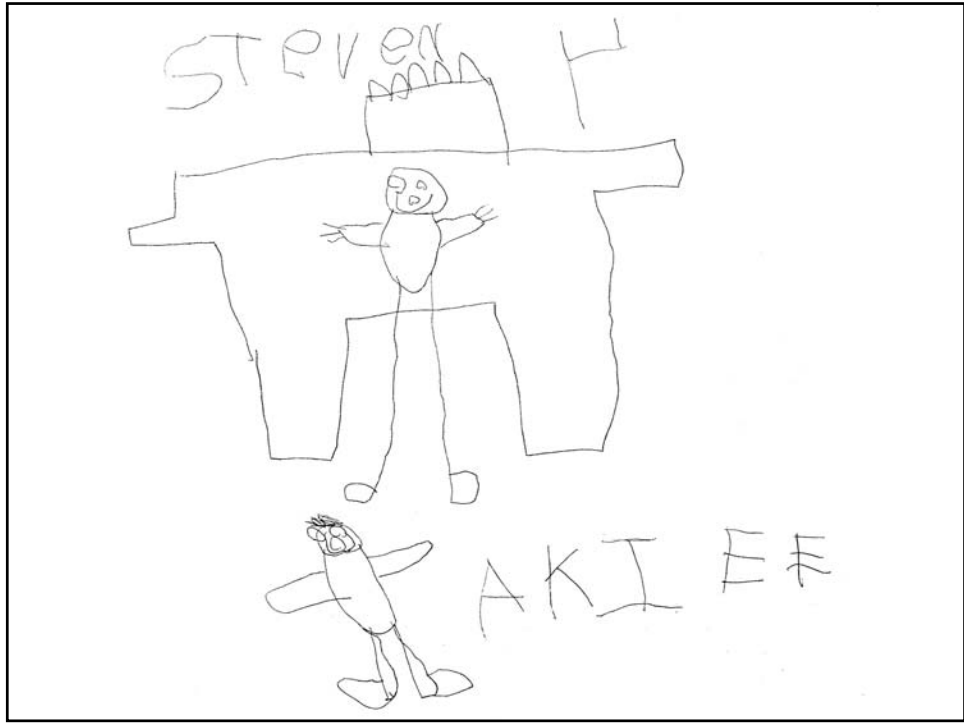
What does MTSS stand for?

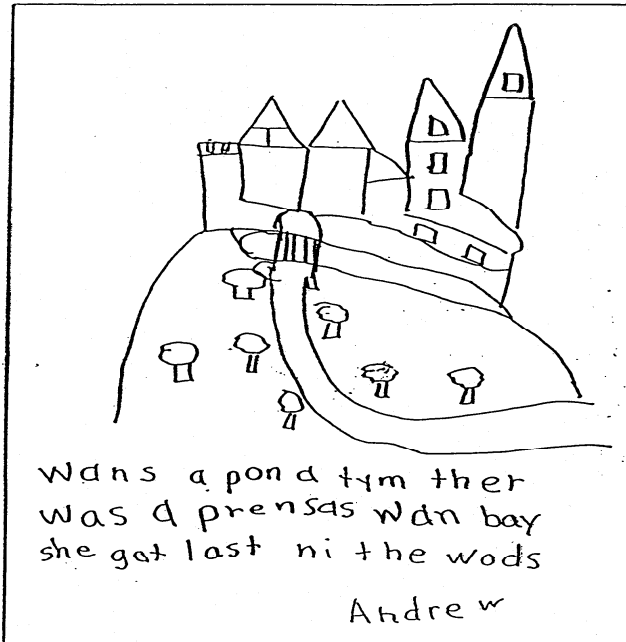
-
-
- Multi-Tier System of Supports
-
-

**“There are really only three types of people:
Those who make things happen;
Those who watch things happen; and
Those who ask, ‘What happened?’”**

Ann Landers







Dear Dad and Mom
I'am learning about conpond
sentenses,and I have \$
4.65,and I realy like you
gies a lot. Dad I hope you
will beavohll to come home
soon . Mom I hope
teaball will start son, and I
love you.

Alek

What We Know...



“There is a greater tragedy than being labeled as a slow learner--and that is being treated as one.”



What We Know...



“Children are eager and capable learners...”

Research

(Hart & Risley, 1995)

	Words Heard per hour	Affirmatives per hour	Prohibitions per hour
Professional family child	2153	32	5

Research

(Hart & Risley, 1995)

	Words Heard per hour	Affirmatives per hour	Prohibitions per hour
Professional family child	2153	32	5
Working class child	1251	12	7

Research

(Hart & Risley, 1995)

	Words Heard per hour	Affirmatives per hour	Prohibitions per hour
Professional family child	2153	32	5
Working class child	1251	12	7
Child living in poverty	616	5	11

How...

“Early intervening services...are **services** for children in **kindergarten through grade 12** (with a particular emphasis on children in kindergarten through grade 3) who have **not** been identified as needing **special education** and related services, but who **need additional academic and behavioral support to succeed** in a general education environment.”

Why...

“Early learning begets later learning and early success breeds later success...The later in life we attempt to repair early deficits, the costlier remediation becomes...”

James Heckman, Nobel Prize-Winner, Economics, 2000

What We Know...



“A longitudinal study of 407 students found that 74% of the children whose difficulty in reading was first identified at nine years of age or older continued to read in the lowest quintile throughout their middle and high school years.”



What We Know...

- The earlier school staff can identify students' difficulties, the quicker and less expensive the task is to help them catch up
- The longer a student goes without assistance, the longer the remediation time and the more intense the services must be



How...

Response to Intervention (RTI) is a way of **screening** children, **early** in their schooling, that can help schools and educators **identify** those who may not be responding to instruction – and thus may be **at risk** for school failure. The technique allows schools, on a **schoolwide** basis, to provide any student more **intensive support**—and **monitor** their **progress**—than typically available in **every classroom**.

What We Need...

- **All students achieving to high standards by being provided sufficient time and support**
- **All teachers teaching students to high standards by being given the right conditions and assistance**
- **Intervention in the learning process occurring when there is an indication of a failure to learn**
- **Early intervention resources focused on the early years of schooling**
- **Low performing students being provided focused instruction**
- **Good first instruction being provided by the classroom teacher**

Leadership Compass, Fall 2006, National Association of Elementary School Principals

Why RTI?

- **RTI eliminates poor instructional quality as a possible explanation for learning difficulty**
- **If a child does not respond to instruction that is effective for the vast majority of children, then there is something different about the child causing the nonresponse**

Why RTI?

Discrepancy Model

- Assumed clear line of demarcation
- Promoted sole use of IQ and achievement tests; less weight on other data
- Promoted a “wait-to-fail”
- Focused on disability

Response to Intervention Model

- Assumes multiple indicators needed
- Promotes use of multiple and varied assessments
- Promotes interventions as soon as possible
- Focuses on educational need and scientifically based interventions

KS Historical Perspective

- 1990: Kansas looked at alternative ways to identify students who receive special education services
- 1995: Provided training to districts for school Student Improvement Teams (SIT)
- 2001: General Education Interventions (GEI) defined in Kansas State Special Education Regulations; removed discrepancy

KS Historical Perspective

- 2001: ESEA Reauthorized (NCLB)
- 2004: IDEA Reauthorized
- 2005: Reading First Initiatives; statewide meetings with stakeholders; teachers, principals, superintendents, school psychologists, university staff, KSDE staff and KSTARS project staff



KS Historical Perspective

- 2007: Stakeholders developed statewide definition, graphic logo and belief statements to support each student
- Increased trainings and pilot sites
- Named it MTSS and included it as topic of discussion at statewide and agency meetings
- Participated as a team at National RTI Summit



KS Historical Perspective



- 2008: Increased the number of districts and schools with MTSS initiatives
 - In 2005: 5 districts, 7 schools
 - In 2008: 25 districts, 42 schools
- Held a statewide summit on MTSS with more than 800 participants and 60 school teams

How does it look in KS...

- RTI refers to a means of identifying a student with specific learning disabilities under IDEA
- EIS is sometimes viewed as an individual student problem solving approach or a standard protocol approach to interventions
- In Kansas, the approach includes both of these approaches and more

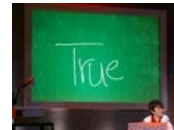
How does it look in KS...

In Kansas, this is referred to as the:

Multi-Tier System of Supports (MTSS)

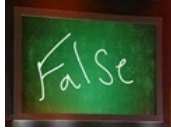


MTSS

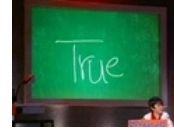


What is MTSS?

- A three-tiered approach with tier 3 as special education
- RTI in disguise
- A way to delay identifying students as in need of special education
- Special education initiative
- A systemic approach to helping all students learn



MTSS



What is MTSS?

-
-
-
-
- **A systemic approach to helping all students learn**

What MTSS is...

1. **Focused on every child's achievement**
2. **Individual child problem solving**
3. **Evidence-based practices for every child**
4. **High quality instruction**
5. **Differentiated curriculum**
6. **Screening**
7. **Progress monitoring**
8. **Data-based decision-making**
9. **Timely, informative**



Focusing on the Name: Multi-Tier System of Supports

Multi-Tier	The Kansas model uses the research base of having multiple tiers of intervention available to all students.
System of	We move beyond programs and focus on bringing our resources together to create a single system to support student learning.
Supports	Student progress data guides the examination and re-alignment of resources to deliver services and supports designed to ensure that each student learns.



Shift in Thinking: System Responds

	From....	To.....
Student	Which students need help?	What help does each student need?
System	Categorical programs and people available	Intentional design based on services and resources needed

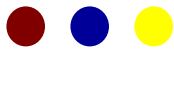


(rev. Dan Reschly, 2004)

How Has it Worked?

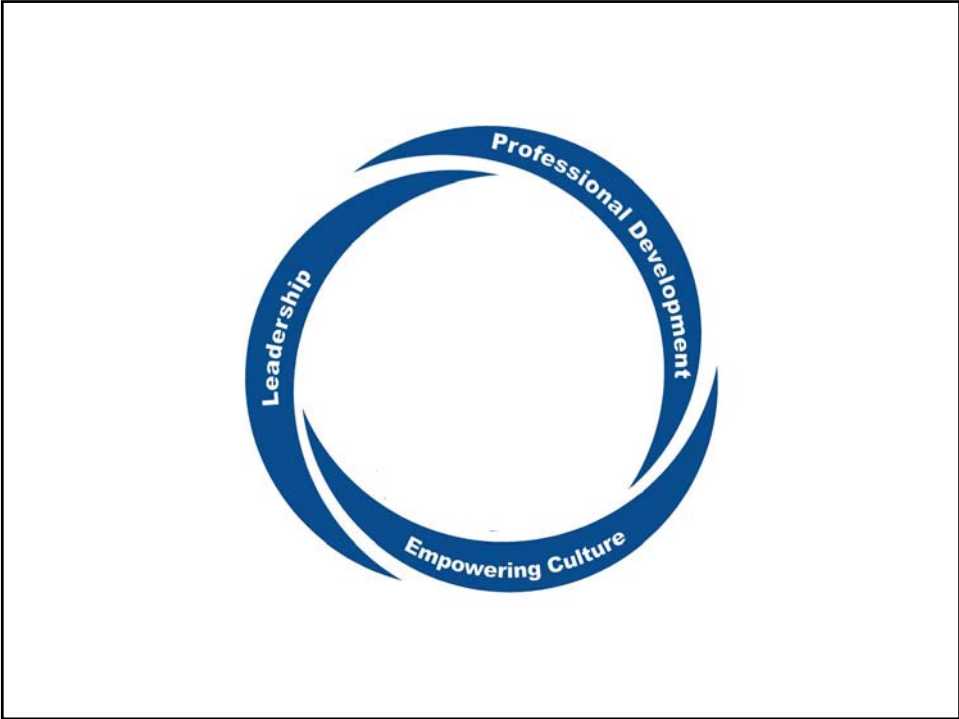
Gloversville, NY:

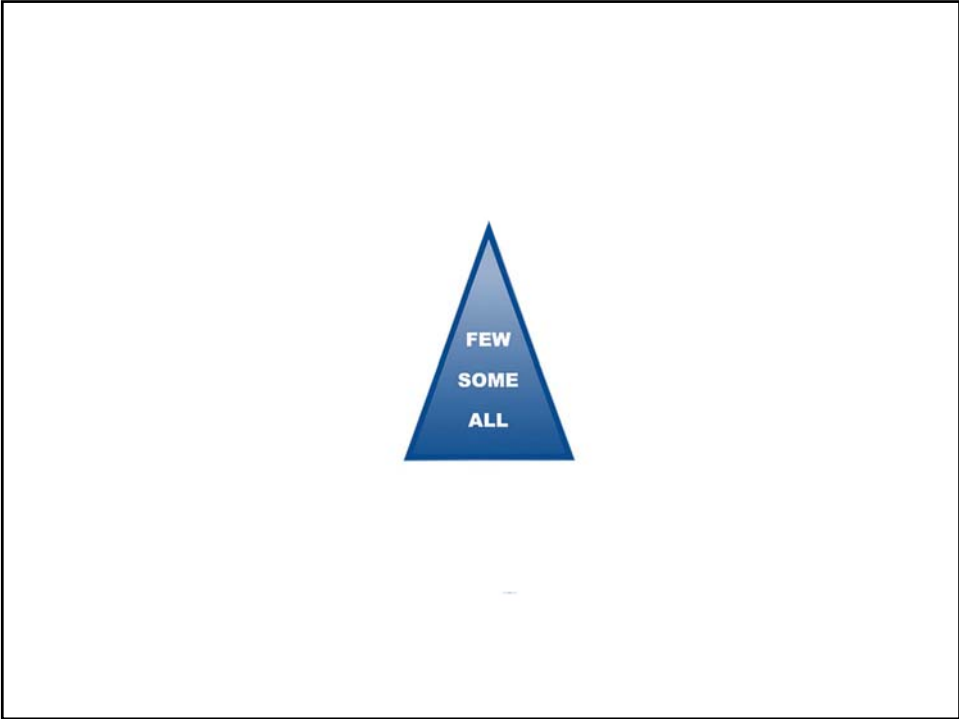
- In 2003, Gloversville Elementary School referred 63 students for a special education evaluation; 53 students were found eligible
- In 2006, 3 years after implementing MTSS, 11 students were referred; 10 students were found eligible



**So what
conditions must
exist for MTSS
to be
successful?**

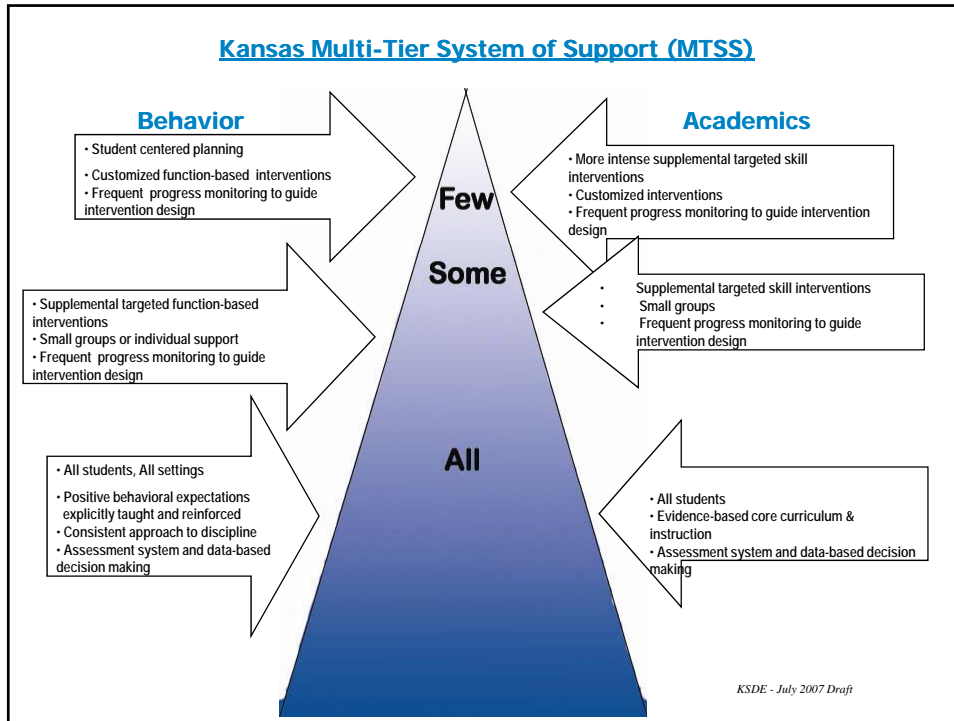






Kansas: Multi-Tiered System of Supports





Simplified MTSS Procedure: Four Parts

1. All children in a class, school, or district are tested once in the fall to identify those students at risk for long-term difficulties
2. The responsiveness of at-risk students to general education instruction (sometimes referred to as Tier 1) is monitored to determine those whose needs are not being met and therefore require a more intensive intervention (Tier 2: Small Group)

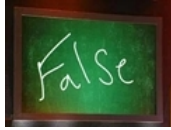
Simplified MTSS Procedure:

Four Parts (cont)

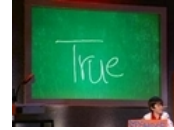
- 3. For at-risk students, a research-validated Tier 2 intervention is implemented; student progress is monitored throughout; and students are re-tested after the intervention**
- 4. Those students who do not respond to validated intervention are identified for multi-disciplinary team evaluation for possible disability determination and special education placement**

Advantages of MTSS

- Provides instructional assistance in a timely fashion (e.g., NOT a wait-to-fail model)**
- Helps ensure a student's poor academic performance is not due to poor instruction or inappropriate curriculum**
- Informs teachers and improves instruction because assessment data are collected and closely linked to interventions**



MTSS

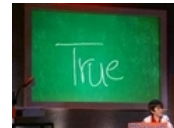


What confounds MTSS?

- Providing timely instructional assistance
- Lacking fidelity of implementation (progress monitoring, limited research)
- Limiting the number of tiers
- Informing teachers and improving instruction because assessment data are collected and closely linked to interventions



MTSS



What confounds MTSS?

-
- Lacking fidelity of implementation (progress monitoring, limited research)
-
-

What Will Success Look Like?

- **An integrated systemic approach to ensure all students receive high quality research based instruction**
- **An increasing intensity of instruction and interventions provided to struggling students as soon as it is needed**
- **General educators assuming an active role in students assessment in the general curriculum**
- **Universal screening of academics and behavior**

What Will Success Look Like?

- **Continuous progress monitoring of student performance**
- **Decision rules to determine intervention effectiveness and needed modifications**
- **Systematic assessment regarding the fidelity with which instruction and interventions are implemented**
- **Referral for a comprehensive evaluation made—*as a last resort*—when appropriate**

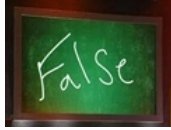
In KS, We Promise All Students...

- You will acquire the same essential knowledge and skills as the other students
- Your learning will be carefully monitored, and you will be given multiple opportunities to demonstrate your learning
- You will promptly receive extra time and support if you experience difficulty in learning
- Your teachers will clarify the standards they will use in assessing the quality of your work
- You will be the beneficiaries of educators who have promised to work together collaboratively to use the practices that have a positive impact on your achievement

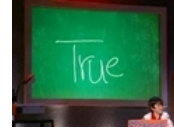
In Order to Ensure That a Thousand Years From Now...

We have helped:

- every 20th child who drops out
- every 10th child who has multiple risk factors
- every 8th child who is mentally or physically challenged
- every 7th child who is Hispanic
- every 6th child who is black
- every 5th child who is poor
- every child



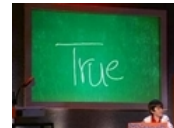
Bonus Question



What convention group has the most number of attendees falling into the water at the San Antonio River Walk?



Bonus Question



What convention group has the most number of attendees falling into the water at the San Antonio River Walk?

- **Librarians**